

Driven tool **KIT** with free **FAST-IN GIFT**

Order driven tools from our latest 2022 special promotion and you'll get as gift 1 FAST-IN holder for free!!!! *
Don't miss the chance!!!!



*Free Fast-in version chosen by KINTEK depending on stock situation.

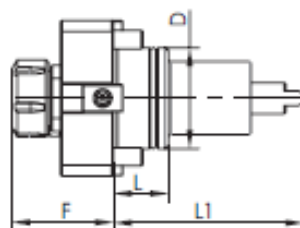
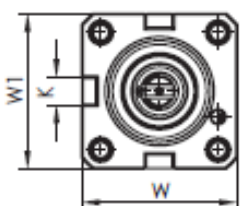
We brand Quality!

30+ years producing toolholders for milling and turning machines

AXIAL DRILLING AND MILLING HEAD

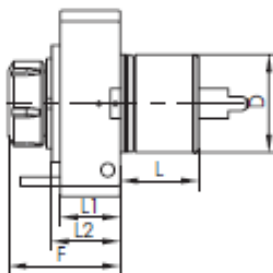
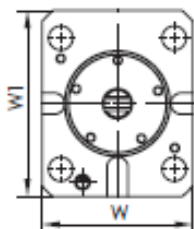
AXIAL BOHR- UND FRÄSKOPF PORTAUTENSILE MOTORIZZATO ASSIALE
 PORTAHERRAMIENTAS MOTORIZADAS AXIAL TÊTE DE PERÇAGE ET FRAISAGE
 АКСИАЛЬНАЯ СВЕРЛИЛЬНО-ФРЕЗЕРНАЯ ГОЛОВКА 轴向钻头头

BMT



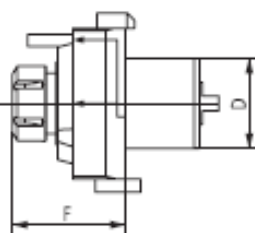
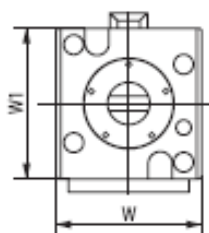
CODE N.	PRICE	BMT	ER	D	F	K	L	L1	W	W1	MAX. SPEED (Rpm)	I	MAX. TORQUE Nm	INTERNAL COOLING
124-04502	852,00	45	ER25	45	67,6	15	40	84	78,5	75	6000	1:1	50	yes
124-05501	797,00	55	ER25	55	71	15	30	104	85	85	6000	1:1	50	no
124-06509	887,00	55	ER25	55	71	15	30	104	85	85	6000	1:1	50	yes
124-06501	991,00	65	ER32	65	75	18	32	112	94	94	6000	1:1	70	no
124-06508	1.065,00	65	ER32	65	75	18	32	112	94	94	6000	1:1	70	yes

MORI SEIKI NL2000



CODE N.	PRICE	ER	D	F	L	L1	L2	W	W1	TORQUE (Nm)	Nmax (rpm)	I	INTERNAL COOLING	P (bar)
124-06003	1.242,00	ER32	60	89	53	48,5	58	108	130	70	6000	1:1	yes	20

OKUMA BMT60



CODE N.	PRICE	D	ER	INTERNAL COOLING	F	W	W1	TORQUE (Nm)	Nmax (rpm)	RATIO	P (bar)
124-06005	1.251,00	60	ER32	no	87	97	100	70	6000	1:1	-
124-06006	1.399,00	60	ER32	yes	87	97	100	70	6000	1:1	20

KINTEK®

INNOVATIVE TECHNOMECHANICAL COMPONENTS

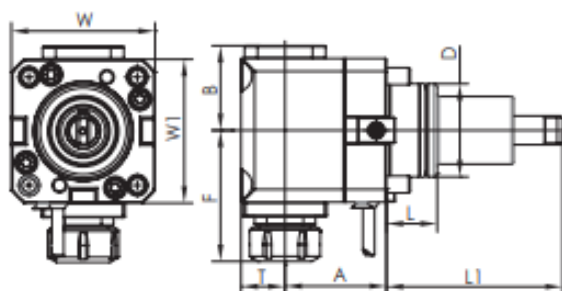
KINTEK®

TORINO - ITALY

RADIAL DRILLING AND MILLING HEAD

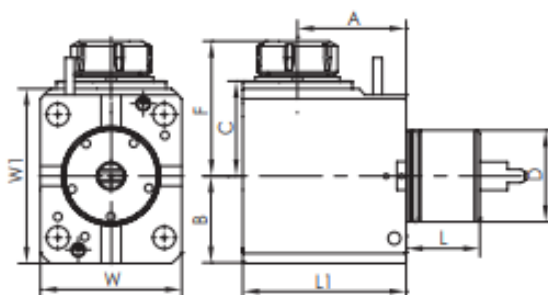
RADIAL BOHR- UND FRÄSKOPF PORTAUTENSILE MOTORIZZATO RADIALE TÊTE DE PERÇAGE ET FRAISAGE RADIAL РАДИАЛЬНАЯ СВЕРЛИЛЬНО-ФРЕЗЕРНАЯ ГОЛОВКА 径向钻头

BMT



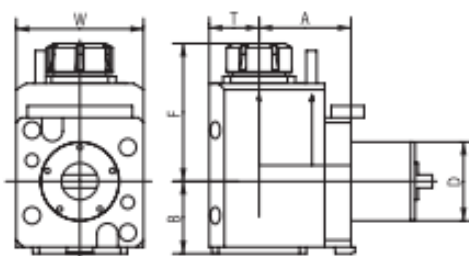
CODEN N.	PRICE	BMT	ER	D	A	B	F	L	L1	T	W	W1	MAX: SPEED (Rpm)	I	MAX: TORQUE Nm	INTERNAL COOLING	P BAR
124-04504	1.501,00	45	ER25	45	65	57	97,6	40	84	36,5	75	83	6000	1:1	50	yes	20
124-05502	1.473,00	55	ER25	55	70	57	98	30	104	36,5	85	98	6000	1:1	50	no	-
124-06510	1.548,00	55	ER25	55	70	57	98	30	104	36,5	85	98	6000	1:1	50	yes	20
124-05511	1.473,00	55	ER25	55	85	57	98	30	104	36,5	85	98	6000	1:1	50	no	-
124-05512	1.548,00	55	ER25	55	85	57	98	30	104	36,5	85	98	6000	1:1	50	yes	20
124-06502	1.723,00	65	ER32	65	72	59	111	32	112	38	94	100	6000	1:1	70	no	-
124-06512	1.797,00	65	ER32	65	72	59	111	32	112	38	94	100	6000	1:1	70	yes	20
124-06513	1.879,00	65	ER32	65	100	59	111	32	112	38	94	100	6000	1:1	70	no	-
124-06514	1.959,00	65	ER32	65	100	59	111	32	112	38	94	100	6000	1:1	70	yes	20

MORI SEIKI NL2000



CODEN N.	PRICE	ER	D	F	L	L1	A	B	C	W	W1	TORQUE (Nm)	Nmax (rpm)	I	INTERNAL COOLING	P (bar)
124-06004	1.862,00	ER32	60	107	53	128	90	65	78	108	130	70	6000	1:1	yes	20

OKUMA BMT60



CODEN N.	PRICE	D	ER	INTERNAL COOLING	DIRECTION	A	B	F	T	W	TORQUE (Nm)	Nmax (rpm)	RATIO	P (bar)
124-06007	1.881,00	60	ER32	no	right/left	70	59	111	38	94	70	6000	1:1	-
124-06008	1.992,00	60	ER32	yes	right/left	70	59	111	38	94	70	6000	1:1	20

INNOVATIVE TECHNOMECHANICAL COMPONENTS

We brand Quality!

30+ years producing toolholders for milling and turning machines

www.kintek.it

SPECIAL PROMOTION 2022

11